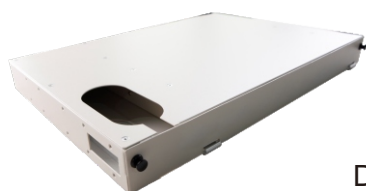


## Rack Mount | ODF-D



D1



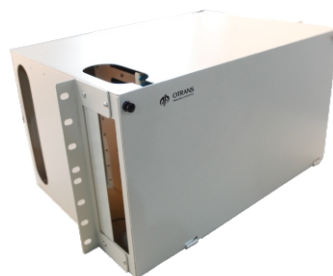
D2



D4



D6



D8

## UR 1U/2U/3U/4U/5.5U RACK-MOUNT ENCLOSURES

- Standard 19".
- Aluminum sheet as raw material.
- 1RU/2RU/3RU/4RU/5.5RU for different requirement .
- Unibody: Splice tray and adapter plat.
- Light weight for security and reliability.
- Slot design for easy operation.
- Better fusion splicing and protection for bare fibers.
- Larger room for management.

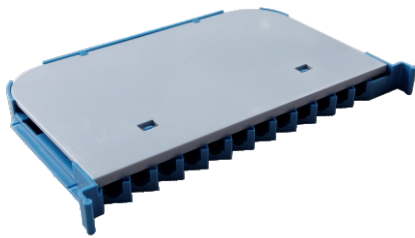
## UR RACK-MOUNT ENCLOSURES

Description	Maximum Capacity		Part NO.
	Adapter(SC/FC)	Splice Tray	
ODF-D1 1U Empty	12/12	1	ODF-D1
ODF-D2 2U Empty	24/24	2	ODF-D2
ODF-D4 3U Empty	48/48	4	ODF-D4
ODF-D6 4U Empty	72/72	6	ODF-D6
ODF-D8 5.5U Empty	96/96	8	ODF-D8

# Rack Mount | ODF-D

## PACKING INFORMATION

Description	D1	D2	D4	D6	D8
Product Dimension	410*310*1U	410*310*2U	410*310*3U	410*310*4U	410*310*5.5U
Packing Dimension	450*330*50	450*330*75	450*330*135	450*335*190	450*330*250
Master Carton Dimension	470*290*350	470*350*245	460*350*290	450*335*190	450*330*250
Master Carton Capacity	5pcs	3pcs	2pcs	1pcs	1pcs
Weight	3.5kg	3.72kg	4.46kg	5.55kg	6.71kg



A



B



C

## ACCESSORIES

Description	Part NO.
A Unibody Splice Tray , 1pc splices 12 fibers.	
B Cable management bracket for spooling.	
C Slot for holding Splice Tray.	

## SPOTLIGHT



Unibody design emphasizes the wholeness of enclosure. Thrusting module makes it convenient for decentralized management as well as the maintenance of cables.