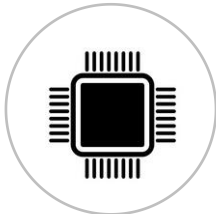


ONT1110-L3 ONU

1*xPON+1G3F+WIFI+VOIP



RTL Chip



Personalized Customization



EPON/GPON
Automatic switching



2.4G WIFI



VOIP Service



■ Product Description:

Optical Network Unit (ONU) is a user-side device in the PON network, providing access services such as data services for users. The main function of the ONU device is to receive optical signals in the downlink direction and convert them into Ethernet packets for transmission to the user, and to convert the Ethernet packets received from user devices or the network in the uplink direction into optical signals and transmit them through the PON network to the upper-level network.

ONT1110-L3 series is an optical network unit (ONU) product within our company's xPON series of products. This product utilizes passive optical network (PON) technology and outperforms traditional access products in terms of cost-effectiveness, maintainability, and scalability.

ONT1110-L3 series offers 1 Gigabit port, 3 100Mbps ports or 1 Gigabit port and 1 100Mbps port (optional), single-frequency WIFI (optional), 1 VOIP interface (optional), and 1 USB interface.

Hardware Specifications

Power related	interface	DC005 φ2.1mm
	Voltage	12V
	power dissipation	≤7W
Environ-ment related	Operating temperature	0~+50°C
	Working humidity	10~85%(non-condensing)
	storage temperature	-30~+60°C
size and weight	Product Size	140*90*26mm
	Package Size	195*190*40mm(1pcs/box)
	Product Weight	300g
	Gross weight	≤0.5Kg
	Box size	700*524*440mm(80boxes/crates)
	Total weight	≤43Kg

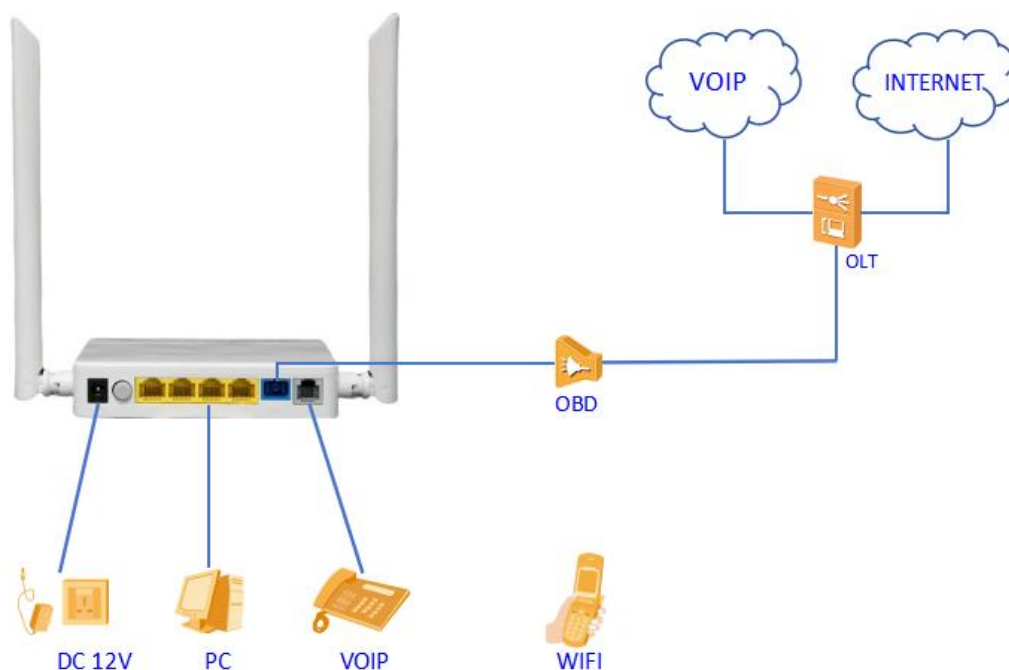
Functional Parameters

Network Type	Support EPON/GPON adaptive
Gateway	Support HGU function
L2 protocol	802.1D&802.1ad bridge, 802.1p Cos, 802.1Q
L3 protocol	Support IPv4/IPv6, DHCP Client/Server, PPPoE, NAT, DMZ, DDNS
LAN Configuration	Support LAN IP and DHCP Server configuration
Network Port	Port Mapping & Loop Detection
Network safe	Support Firewall and ACL
Multicast	Support IGMP Snooping/Proxy

Port Parameters

PON	Interface Type	SC/UPC
	Receive sensitivity	≤-27dBm
	Luminous power	+0.5~+5dBm
	Transmission distance	20Km
LAN	Working wavelength	TX: 1310nm RX: 1490nm
	Interface Type	1 gigabit, 3 hundred-megabit or 1 gigabit, 1 hundred-megabit RJ45 interface
Wi-Fi	Transmission mode	Gigabit: 10/100/1000 Mbps adaptive Hundred Megabit: 10/100 Mbps adaptive
	protocol	IEEE802.11a/b/g/n
	2.4G working frequency	2.400-2.4835GHz
	2.4G External Antenna	2*2MIMO, 300Mbps
VoIP	Number of antennas	2* 5dB high-gain antennas
	SIP	Support SIP
	Audio Coding Standard	Support G.711a/G.711u/G.722/G.729 Codec
	Other	Supports echo cancellation, VAD/CNG, and DTMF Relay functions
		Support T.38 fax / caller identification / call waiting / call
		Support transfer/call transfer/call hold/three-party conference

■ Product Application:



■ Ordering Guide:

3	1	1	0-L3
LAN:	WIFI:	VOIP:	
3:1GE3FE	1:2.4G WIFI4	1:1VOIP	
1:1GE1FE	0:NO WIFI	0:NO VOIP	